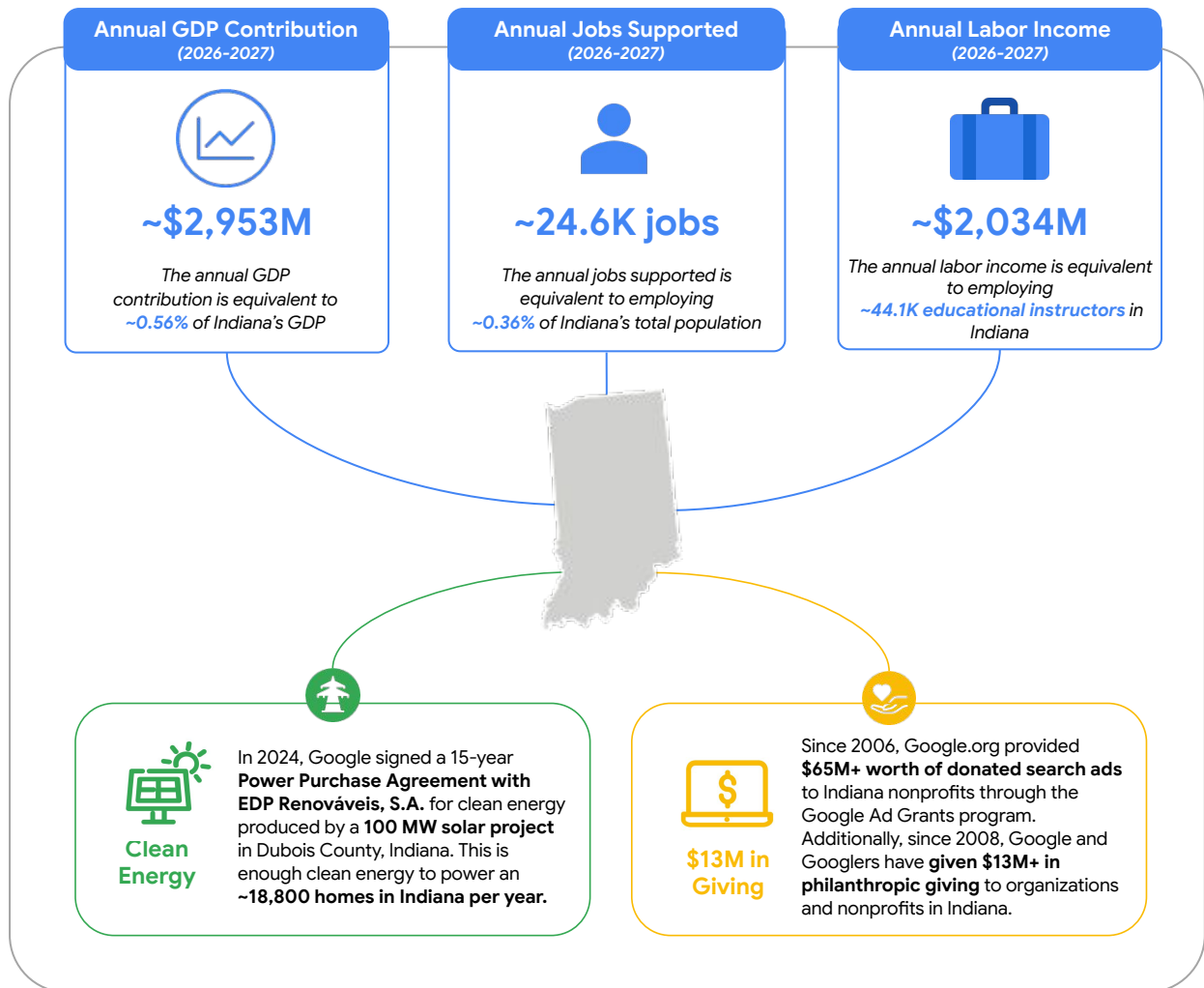


# Supporting Indiana's Digital Future

## How Google's Investments are Creating Economic Opportunities

Google has been investing in Indiana's technology sector and digital infrastructure since 2024. Google's planned investment between 2026–2027 to build a data center in Indiana is projected to contribute to the country's economy through GDP contribution, job creation, and labor income generation—underscoring Google's commitment as a long-term partner to the state.

**Google's direct investments set off a multiplier effect**, fueling job creation and economic activity in sectors such as construction, energy, and technical services that support local communities in Indiana.



The above GDP, jobs, and labor income figures include direct, indirect, and induced impacts from Google's digital infrastructure investments in Indiana. Average annual projected impacts and investment impacts are for 2026–2027. All job impact numbers are rounded to the nearest 100, and GDP and labor income dollar values (\$) are rounded to the nearest million. Dollar values (\$) are reported in the 2026 dollar year. The impacts were calculated in partnership with Deloitte Consulting LLP. The sources for the GDP, Jobs, and Labor Income contextualizations are IMPLAN region details (based on 2024 data) and the [Indiana 2024 Census](#) (based on educational instruction and library occupation). The sources for Google's efforts in Indiana are from [EDPR](#), [EIA's solar capacity factor](#), [EIA's residential electricity consumption](#), and [Google 2024 Indiana Economic State Report](#). To calculate economic impacts, this report leverages an Input-Output model approach using IMPLAN® model, 2024 Data Year, using inputs provided by the user and IMPLAN Group LLC, IMPLAN System (data and software). The model assumes constant returns to scale and no supply constraints. For additional information, refer to [Detailed Key Assumptions of IMPLAN & Input-Output Analysis](#). Economic inputs represent generalized investments and do not account for any tax incentives or exemptions specific to this investment. The map on was generated from [MapChart](#). *Disclaimer: This analysis is based on information and estimates available through the date of this Report, and any revisions to those data will affect the assessment shown as part of the Report. Deloitte Consulting LLP has, without independent verification, relied on the accuracy of the information made available by Google.*